

COCKROACHES CAN



- Run up to 3 miles per hour
- Live underwater for 30 min.
- Can trigger asthma when their saliva, feces and shed body parts are kicked up in the air
- Eat almost anything to survive, including feces and other cockroaches

MICE CAN



- Travel up to 1-1/2 miles
- Gnaw through many materials
- Climb most rough vertical surfaces
- Burrow under structures
- Hang upside down from screen wire
- Survive and reproduce at temperatures down to 24°

RATS CAN



- Climb outside vertical pipes
- Crawl inside 1½" vertical pipes
- Gnaw through many materials
- Jump 3 feet up and 4 feet ahead
- Fall up to 50 feet without getting hurt
- Burrow 3 feet into the ground
- Stretch to reach up to 13"
- Swim up to half a mile
- Dive through water traps

**THIS INFORMATION IS
PROVIDED COURTESY OF**



**PLEASE REPORT ANY PESTS
FOUND INSIDE OR OUTSIDE
OF YOUR UNIT**

This must be done in person at your local property management office.

**PEST
MANAGEMENT**

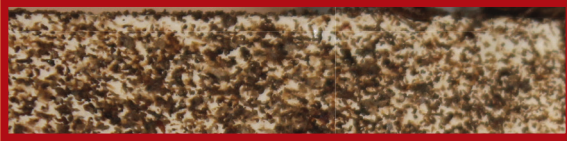
**PREVENT AND SOLVE PEST PROBLEMS
SAFELY AND EASILY**



DO I HAVE PESTS?

The most common household pests in our area are German Cockroaches, house mice and rats. Below are photos of them and the droppings they leave behind.

GERMAN COCKROACH



Looks like black pepper or ground coffee

MOUSE



RAT



Skinny pellets, like very small brown grains of rice

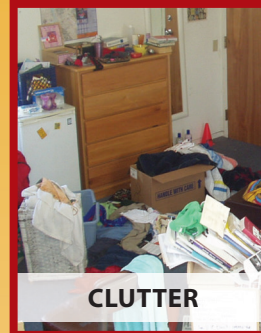
WHAT DO PESTS LIKE?

Pests are attracted to things they like to eat and easy ways to enter your home.

Some examples include:



BIRD FEEDERS



CLUTTER



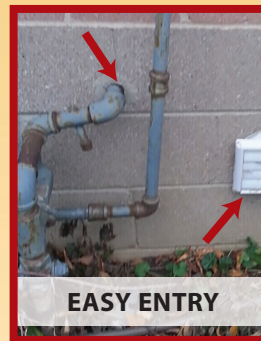
GARBAGE



DOG FECES



LEAKS



EASY ENTRY

HOW DO I STOP THEM?

If you see a cockroach, mouse, or rat, in or near your unit, please notify your management office right away to prevent greater infestation.

It is important to control pests without using harmful chemicals that can hurt humans. We recommend:



BAIT STATIONS



GLUE BOARDS



CLEAR DEBRIS



BLOCK ENTRY

CLEAN HABITS

- Clean spills right away
- Remove clutter
- Put food in tightly sealed containers
- Keep food off counters
- Keep trash in closed bins and empty often
- Have plumbing and other water leaks fixed
- Seal cracks and holes



DO NOT SPRAY